

# Key<sup>2</sup>



## VEHICLE MANAGEMENT

### Key2 Vehicle Management

Key2 Vehicle Management is a totally integrated vehicle, asset and driver management solution proven to help control costs along with helping to ensure legislative compliance, optimise fleet performance, reduce risk and significantly improve operating efficiencies.

- Fully Scalable - Key2 is fully scalable and is used by a complete spectrum of companies - from customers with a handful of vehicles to many of our customers who have thousands of vehicles and assets.
- Holistic View of Your Entire Fleet - Key2 seamlessly interfaces with internal and external systems, ensuring all of your vehicle and driver data is only manually entered once.

### Service, Maintenance and Repair

Preventative maintenance is paramount for any vehicle operator, as poor maintenance control and record keeping can cause unnecessary expense and downtime as well as impacting on your duty of care.

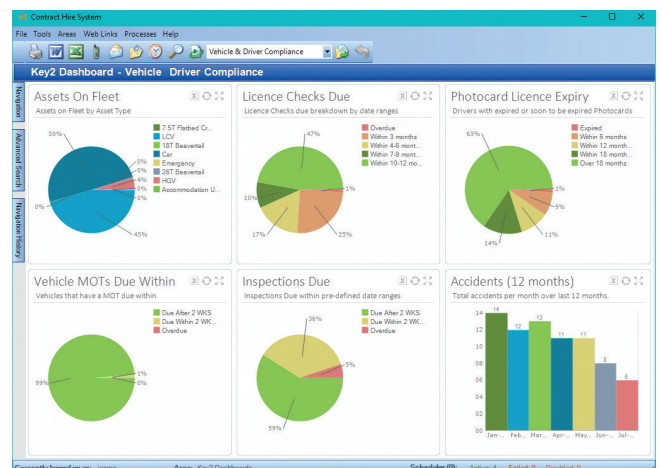
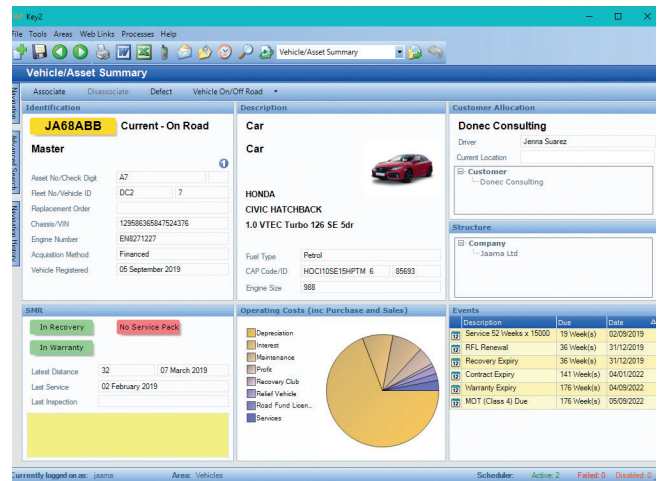
Key2 provides:

- Routine event scheduling and notification
- Highlighting of potential warranty items
- Maintenance due reporting
- Maintenance spend against budget
- KPI reporting that highlights areas for concern

### Key2 Today Dashboard

Get a complete overview of the high level fleet information metrics.

That you need to be aware of with Key2 Today – the configurable homepage dashboard enables you to drill down from ‘top-level’ information to get to the fine detail of exceptions.



Gold Application Development

# Key 2

## VEHICLE MANAGEMENT

### Fuel and Fuel Card Management

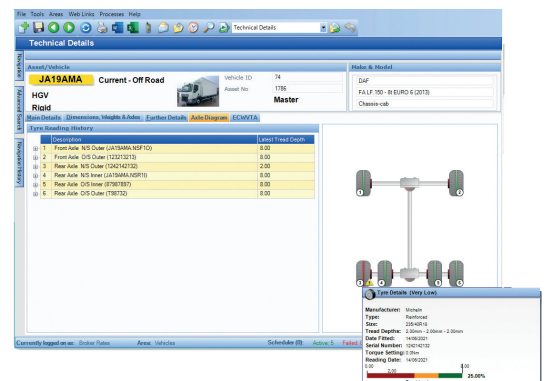
One of the largest expenditures associated with running vehicles is fuel; the ability to measure monitor and manage fuel costs is essential.

- Fuel management functionality allows you to import fuel data from bunker sites, own pumps and major fuel cards.
- Reporting on actual MPG against the associated vehicle expected MPG.
- Highlighting of transactions that exceed fuel tank capacity.
- Carbon footprint calculations to assist with mandatory carbon reporting.



### Compliance Management

- Tyre Management - Systemised validation of incoming tyre costs against pre-agreed costs matrices to ensure correct charging for tyres.
- Reporting - Robust, intuitive reporting functionality enables you to analyse data, track, measure and strategically manage your fleet. Reports can be scheduled to automatically run and be distributed to recipients via email.
- Document Management - All required documentation is stored electronically and gives a centralised view and single repository of all compliance data and documentation. Earned Recognition Data can be submitted directly to the DVSA as Jaama is a validated IT Supplier for the Earned Recognition Scheme.



### Manage Driver Risk by Exception

Efficient driver management is essential - from licence checks to risk assessments, our all in one solution provides you with a totally holistic view of your drivers.

Monitor and assess your drivers' risk with Key2 Driver Risk Management. Go above and beyond in terms of driver monitoring, assessing and risk management with our comprehensive, fully configurable tool.

- Traffic light system profiling means you can quickly see at a glance which drivers are at risk.
- Key2 alerts you if action is required by analysing associated risk data relating to driver accidents, endorsements and mileage.
- The amount of points, combined with the accident history of the driver is used to determine the risk of the driver. The higher the perceived risk of the driver, the more frequent their licence should be checked.

# Key<sup>2</sup>

## VEHICLE MANAGEMENT

### Licence Checking Made Easy

Reduce risk, time and administration with Jaama's Licence2Check service that instantly checks driver licence details with the DVLA and fully integrates with Key2

Ensure that your drivers have the appropriate licence categories to legally drive vehicles on company business and maintain accurate records of endorsement points with our secure, simple to use service.



### Driver Portal - Everything to Service Your Drivers

Driver Portal acts as a self-serve portal and is designed to put the emphasis on company car drivers and employees who use their own cars for business to keep both their personal data and their vehicles data up to date.

- Enables drivers to upload documents such as eyesight checks, MoT records and insurance certificates.

### Grey Fleet Management

Key2 includes comprehensive grey fleet management parameters enabling you to ensure all data relating to both grey fleet drivers and their vehicles is valid and up-to-date.

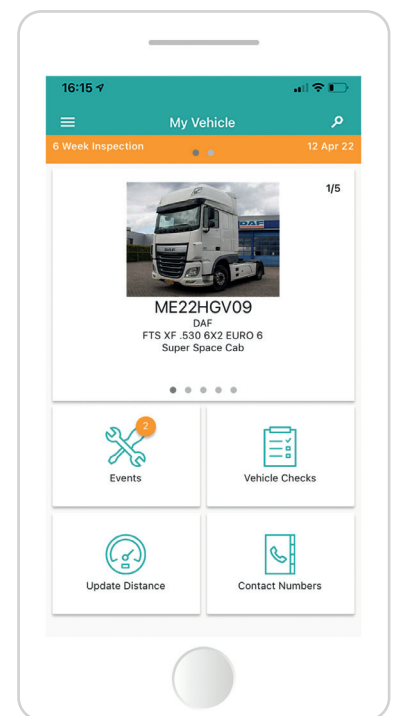
### Driver App

Jaama's MyVehicle App complements the Key2 system to reduce administration, information uploaded through the app automatically updates the related asset record in Key2 without manual intervention.

MyVehicle App from Jaama is an award-winning smartphone app for the fleet industry that not only makes life simpler for drivers but also provides centralised real-time visibility for fleet managers.

Daily walk-around vehicle checks have never been easier as defects are reported directly within the app.

- Real time defect and nil defect reporting can ensure maintenance and defect rectifications are dealt with immediately which minimises costly downtime
- Photos of defects can be uploaded to ensure that the rectification requirements are fully understood early on in the process
- Configurable vehicle and asset checklists ensures the applicable items are being checked based upon the asset type
- Full audit trail of defect reporting ensures tight control on compliance management
- Remove paper checklists which are both expensive and inefficient



# Key2

## VEHICLE MANAGEMENT

### Go Paperless

Our aim is to enable customers to work in a paperless environment and run their fleets from anywhere.

- Electronic storage of vehicle and driver documents such as driver licences, vehicle V5C registration records, MoT and vehicle compliance documentation.
- eSignature enables a document to be sent, signed using an electronic signature, and instantly returned back into Key2 which expedites any process that requires documents to be printed, signed and then manually uploaded back into the system.

### Key2 Vehicle Management Features

- Vehicle ordering
- Expense management and cost allocation
- Insurance management
- Accident management
- Disposal management
- Allocation history
- Fine management
- Electronic document storage and eSignature functionality
- P11D, P46 and BIK calculation
- Fully GDPR compliant
- Seamless interface with internal or external systems

### Customers Using Key2 Vehicle Management Include:

JOHN LEWIS  
PARTNERSHIP



Alltruck  
plc



JCT600

serco

GallifordTry

Herd

Novuna<sup>®</sup>  
Vehicle Solutions



Pertemps



ogilvie  
FLEET

### Switching software supplier or procuring a new system has never been easier

For further information on why Jaama is the industry's benchmark for quality and innovation and is recognised as the most advanced software supplier in the market, and to arrange a demonstration of our software, please contact us today.