

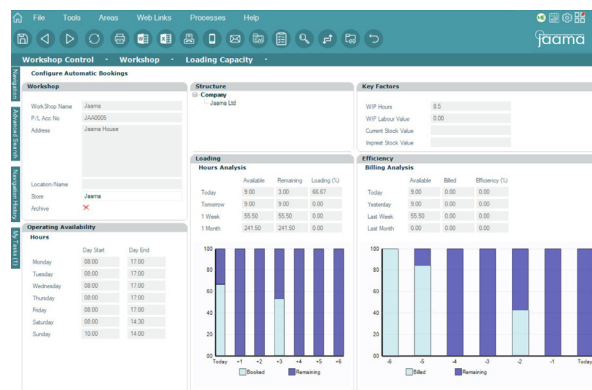
Key2

WORKSHOP

AND STORES MANAGEMENT

Key2 Workshop and Stores Management

Key2 Workshop and Stores is a totally integrated fleet and workshop management tool which utilises touchscreen technology within the workshop to reduce administration and aids enables the provision of real time management information.



Key2 Workshop and Stores

Managing your workshop, technicians and stock control can be difficult - cost management and vehicle operational compliance are fundamental requirements for fleets.

Key2 Workshop is fully scalable and is used in single workshops and multi-workshops with multiple store environments. Jaama customers embrace Key2 software to improve their effectiveness and keep costly administrative overheads to a minimum.

Key2 Workshop and Stores seamlessly integrates with other areas of Key2 and provides a central repository for all fleet information that's easily accessible.

Key2 Workshop Features Include:

- ✓ Real time control over local and remote workshops.
- ✓ Job booking and workshop diary.
- ✓ Workshop loading.
- ✓ Invoicing.
- ✓ KPI dashboards.
- ✓ Defect management.
- ✓ DVSA compliance.

Maintenance Exchange

This 'end to end' maintenance system (fully integrates with Key2) allows seamless booking, authorisation, invoicing and auditing of vehicle maintenance work. All required documentation, typically MoT certifications, vehicle inspection sheets, servicing and routine maintenance documents can be shared between service and repair centres, vehicle owners or operators and the DVSA.

Key2

WORKSHOP

AND STORES MANAGEMENT

KPI Dashboard

Get a complete overview of the high level workshop and fleet information metrics that you need to be aware of with Key2 Today – the configurable homepage dashboard enables you to drill down from ‘top-level’ information to get to the fine detail of exceptions.

Stores Management

Intuitive software is essential to control the valuable stock on your shelves. Key2 ensures seamless management of your stock control.

- ✓ Manage the ordering, delivery and payment of stock parts.
- ✓ Production of bar codes for stock items.
- ✓ Stock issuing and control.
- ✓ Return stock items and view individual stock item histories.
- ✓ Suggested stock replenishment quantities and automated ordering against preferred suppliers.
- ✓ Recognise slow moving and obsolete stock.



Touchscreen Technology

Move a step closer towards a true paperless environment. There's no need for job cards or inspection sheets to be printed which optimises operational efficiency, reduces human error and ensures accuracy.

- ✓ Jobs can be allocated, started, paused and completed to ensure accurate job time logging.
- ✓ Allow technicians to view, add and issue parts for each job via appropriate job sheets.
- ✓ View maintenance history for the associated asset.

Key2 Workshop and Stores

Intuitive software is essential to control the valuable stock on your shelves. Key2 ensures seamless management of your stock control.

- ✓ Routine event scheduling and notification.
- ✓ Highlighting of potential warranty items.
- ✓ Maintenance due reporting.
- ✓ Maintenance spend against budget.
- ✓ KPI reporting that highlights areas for concern.
- ✓ Powerful operational control of all aspects of internal workshops.
- ✓ In-depth performance monitoring of technicians, workshop activity and vehicle downtime.
- ✓ Financial control over all workshop repair and servicing expenditure.

Key2

WORKSHOP

AND STORES MANAGEMENT

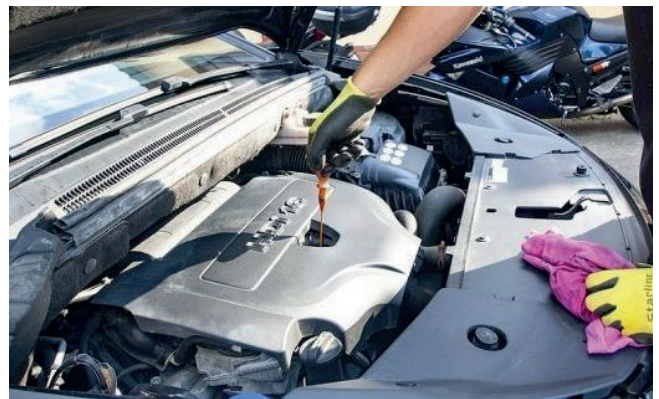
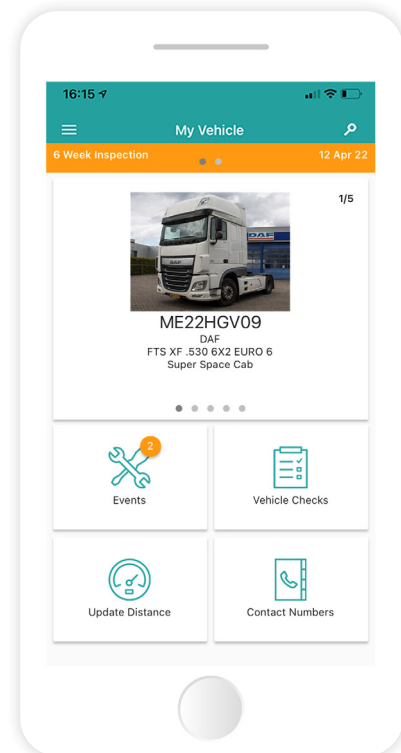
Driver App

The MyVehicle app complements the Key2 system to reduce administration and information uploaded through the app automatically updates the related asset record in Key2 without manual intervention.

MyVehicle app from Jaama is an award-winning smartphone app for the fleet industry that not only makes life simpler for drivers but also provides centralised real time visibility for fleet managers.

Daily walk-around vehicle inspection checks have never been easier as defects are reported directly within the app.

- ✓ Real time defect and nil defect reporting can ensure maintenance and defect rectifications are dealt with immediately which minimises costly downtime.
- ✓ Photos of defects can be uploaded to ensure that the rectification requirements are fully understood early on in the process.
- ✓ Configurable vehicle and asset checklists ensure the applicable items are being checked based upon the asset type.
- ✓ Full audit trail of defect reporting ensures tight control on compliance management.
- ✓ Remove paper checklists which are both expensive and inefficient.



WORKSHOP

AND STORES MANAGEMENT

Customers Using Key2 Workshop Include:

SKANSKA



NHS
South Central
Ambulance Service
NHS Foundation Trust

ESH GROUP



Falkirk Council



"We use the Workshop Management module to track all vehicle repairs on a day-to-day basis and the Stores module to maintain, issue and purchase stock and non-stock parts. Together they synergise to provide a fully joined up service from vehicle arrival to completion."

"While touchscreen was new to the technicians they jumped at the chance to move from a largely paper-based workshop management and job sheet system. They realised the significant benefits."

Owain Pearce – Fleet Technical Officer, Oxford City Council



"The Workshop Touchscreen module means a consistency of information as there is no job sheet duplication or issues around reading other people's handwriting; and easy access to individual vehicle management reporting audit consistency. That is definitely an improvement and the roll out of the touchscreen module was very smooth."

Bill Morton – Fleet Manager, Perth and Kinross Council



Switching software supplier or procuring a new system has never been easier.

For further information as to why Jaama is the industry's benchmark for quality and innovation and is recognised as the most advanced software supplier in the market, and to arrange a demonstration of our software, please contact us today.